

Electric Shower Heater – icare Shower

Issue 1 March 2015

Product overview

Thermostatically controlled digital care shower with easy to use controls and shower kit.

Care features

- + Easy push-button controls: Power, Temperature, Flow
- + All controls closely grouped together
- + Thermostatic Control and Phased/Auto Shutdown
- + Raised tactile symbols: +, -, Temp, Flow
- + Audible Temperature and Flow Indicators
- + LED Illuminated Temperature and Flow Indicators
- + Matt anti-glare finish
- + Rounded surfaces and edges for safety
- + Eco-flow option for optimum water usage
- + Push button on/off memorises last user setting
- + Smooth silver 2m easy clean hose
- + 150kg load-bearing rail
- + Easy adjust shower head with 3 modes (removable)
- + Integral hose retaining ring
- + Push button shower head slider
- + Removable high contrast soap dish fixing
- + Additional wall shower head bracket included
- + Available in White or Silver
- + iShower app for iPhone
- + Bluetooth Smart wireless remote control (optional)



Installer features

- + Super-quick and easy installation
- + 8 electrical / 8 water entry points
- + Dual power blocks for left or right hand wiring
- + Retro-fit footprint covers most manufacturers' models
 - No re-tiling required
 - Existing cable & pipework compatible
- + 3 year warranty
- + 8.5kW / 9.5kW / 10.5kW options
- + Comprehensive technical after-sales support
- + Wireless connectivity to all AKW DigiPump shower waste pump

Guarantee and approvals



Electric Shower Heater – icare Shower

Issue 1 March 2015

Product specification

Plumbing Supply

| | |
|-----------------------------------|--|
| Supply Source | Mains Pressure Cold Water Only |
| Minimum Dynamic Pressure | 50 kPa (0.5 Bar) |
| Maximum Static Pressure | 1000 kPa (10 Bar) |
| Optimal Minimum Dynamic Pressure* | 100 kPa (1 Bar) (recommended to ensure high performance) |
| Inlet Water Temperature Range | 3°C - 21°C |
| Inlet Connection | 15mm Push-Fit |
| Outlet Connection | 1/2" BSP Male Thread Fitting |

Electrical Supply

| | |
|-----------------------------------|---|
| Electrical | 220-240VAC |
| Nominal Rating at 240V | 8.5kW, 9.5kW, 10.5kW |
| Supply Fust/Circuit Breaker | 8.5kW 35/40A, 9.5kW 40/45A, 10.5kW 45/50A |
| Residual Current Device (RCD) | 30 mA (must be fitted) |
| Continuously Rated | |
| Supply Cable | Refer to current wiring regulations and BS 7671 to determine minimum cable size. Maximum cable size 10mm ² |
| Stand-by Power Consumption | < 0.5W |
| Isolation Switch (e.g. Pull Cord) | 45 Amp Double Pole with 3mm Contact Separation |

Physical

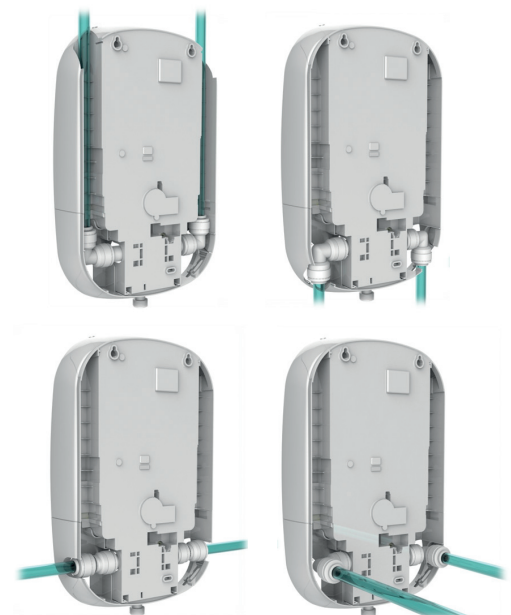
| | |
|-------------------------------|--|
| Water Ingress Rating | IPX4 |
| Water and Cable Entry Points | Top, Bottom or Back |
| Shower Drain Pump Connections | Suitable for M Series, (flow sensor) or AKW A4 (flow switch) |

Flow Rates

| | |
|-----------|---------|
| Low Flow | 3.5 LPM |
| Med Flow | 5.5 LPM |
| High Flow | 9 LPM |



Entry points



Electric Shower Heater – icare Shower

Issue 1 March 2015

Product codes

| | |
|---------|---|
| 29010WH | icare White 10.5kW with Silver/White Kit |
| 29011WH | icare White 9.5kW with Silver/White Kit |
| 29012WH | icare White 8.5kW with Silver/White Kit |
| 29010Si | icare Silver 10.5kW with Silver/White Kit |
| 29011Si | icare Silver 9.5kW with Silver/White Kit |
| 29012Si | icare Silver 8.5kW with Silver/White Kit |
| 29013 | icare Shower Remote Control (optional) |
| 29014 | Wireless Pumped Interface (optional) |

Dimensions

| | |
|-----------------------|-------|
| Height (H) | 380mm |
| Width (W) | 230mm |
| Depth (D) | 85mm |
| Footprint Height (H2) | 345mm |
| Footprint Width (W2) | 210mm |

Product compatibility

- + All AKW digital and manual shower pumps
- + Wireless pumped interface
- + Bluetooth® Smart wireless remote control
- + iShower App for iOS devices

